

20'

THE DOUGLAS

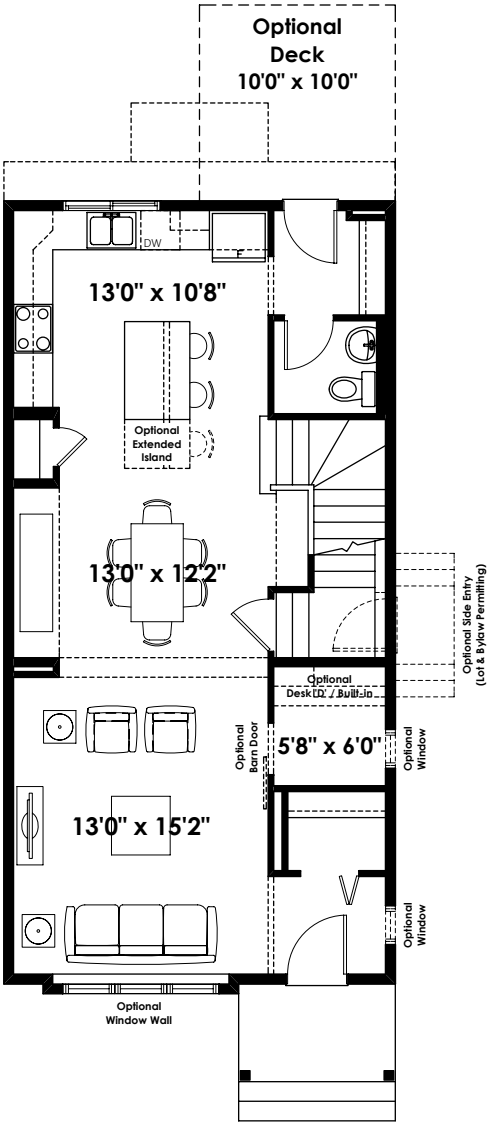
1,948+ SQ FT | 3 BED | 2.5 BATH



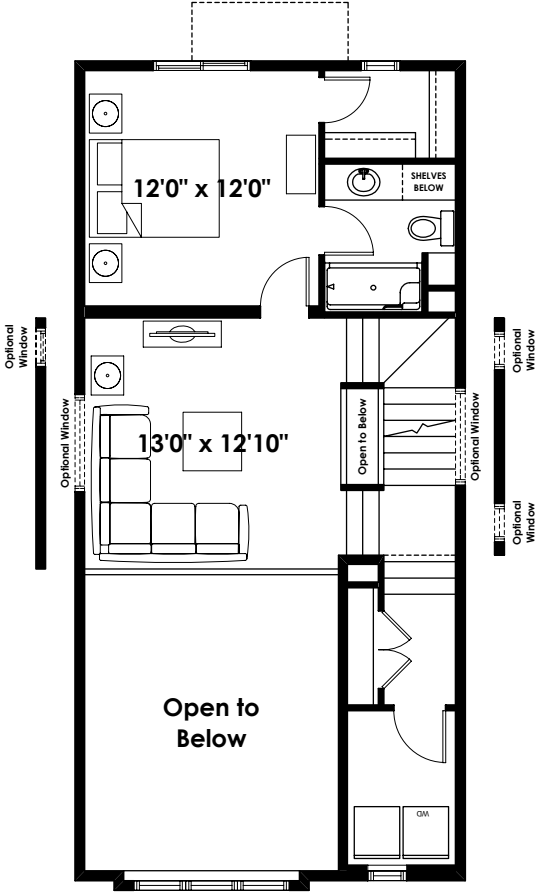
BETTER VALUE BY DESIGN
SINCE 1978 | HOMESBYAVI.COM

Homes by **AVI**

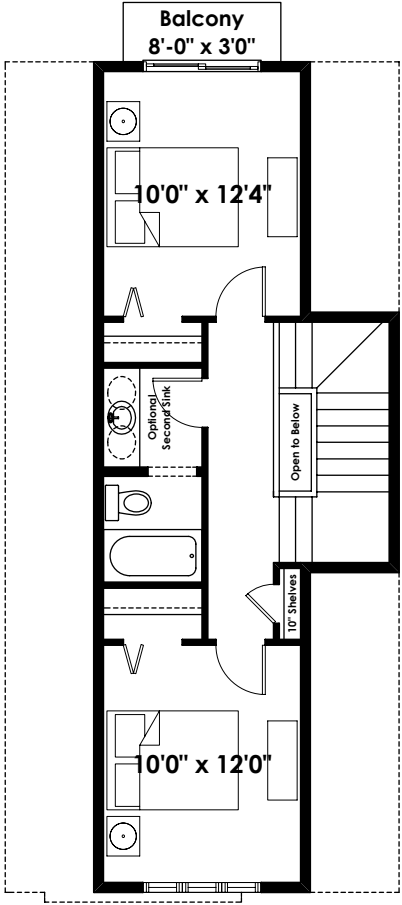
BASE FLOOR PLAN



MAIN
800 SQ FT

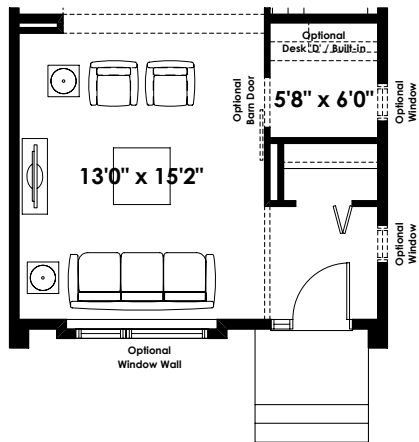


UPPER
635 SQ FT

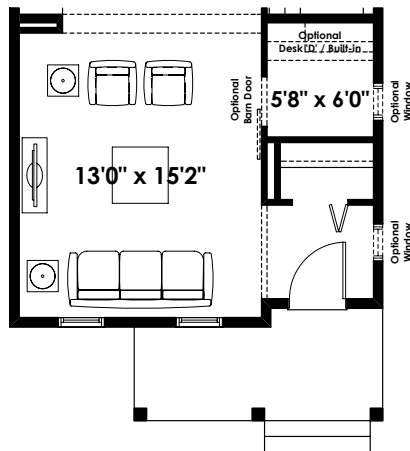


THIRD
513 SQ FT

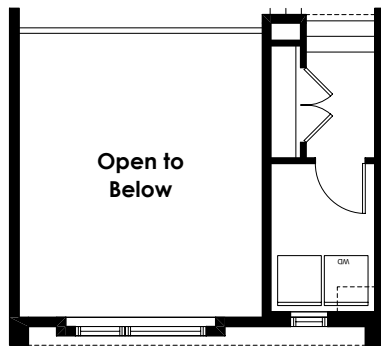
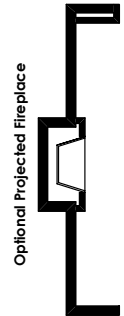
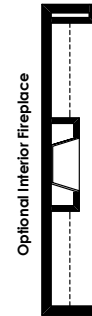
FLOOR PLAN OPTIONS



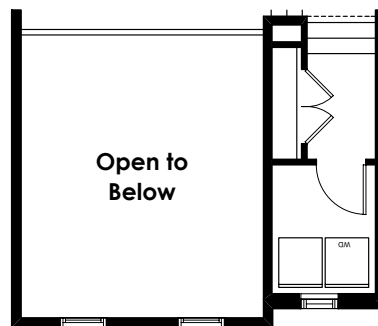
**Partial DOUGLAS Main Floor Plan
for Ryden Elevation
(Adds 0 Sq. Ft. to Main Floor)**



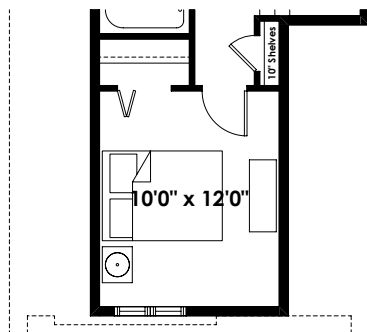
**Partial DOUGLAS Main Floor Plan
for Braeden Elevation
(Removes 6 Sq. Ft. from Main Floor)**



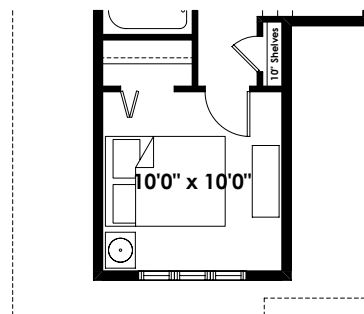
**Partial BRENT Second Floor Plan
for Ryden Elevation
(Adds 0 Sq. Ft. to Second Floor)**



**Partial BRENT Second Floor Plan
for Braeden Elevation
(Removes 6 Sq. Ft. from Second Floor)**



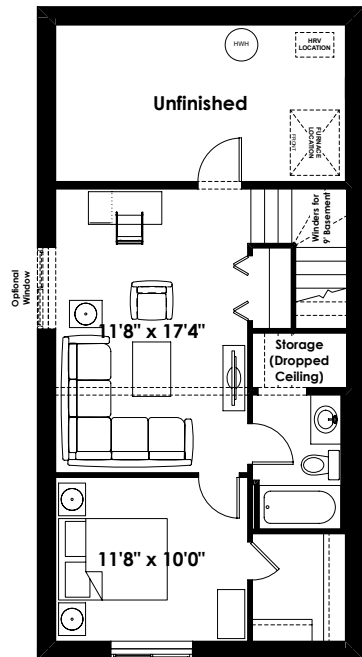
**Partial BOYD Third Floor Plan
for Ryden Elevation
(Adds 0 Sq. Ft. to Third Floor)**



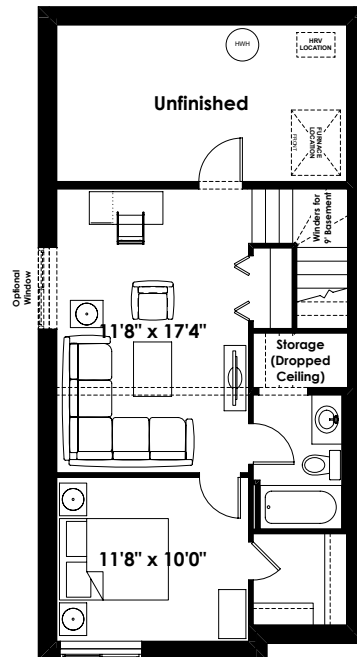
**Partial BOYD Third Floor Plan
for Braeden & Braxton Elevations
(Removes 22 Sq. Ft. from Third Floor)**

**ADDITIONAL
OPTIONS**

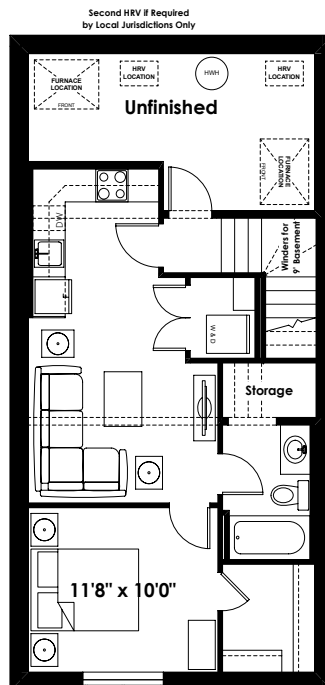
FLOOR PLAN OPTIONS



DOUGLAS Optional Basement Room
Layout for Anders & Ryden Elevations
492 Sq. Ft. (Finished)



DOUGLAS Optional Basement Room
Layout for Braeden & Braxton Elevations
(Removes 6 Sq. Ft. from Finished Area)



DOUGLAS Optional Basement Suite
Layout for Anders and Ryden Elevations
519 Sq. Ft. (Finished;
Must Add Optional Side Entry)

BASEMENT SUITE MAY NOT CONFORM
TO ALL MUNICIPALITIES;
LAND USE BY-LAW & CODE MUST BE
REVIEWED PRIOR TO ACCEPTANCE

Prices are subject to change without notice. Actual floor plan, elevation, and square footage may not be exactly as shown. Square footage is measured to Alberta Building Code (ABC) regulations. Builder reserves the right to make changes without notice. E&OE.

Homes by **AVI**