

30'

THE MARICOPA

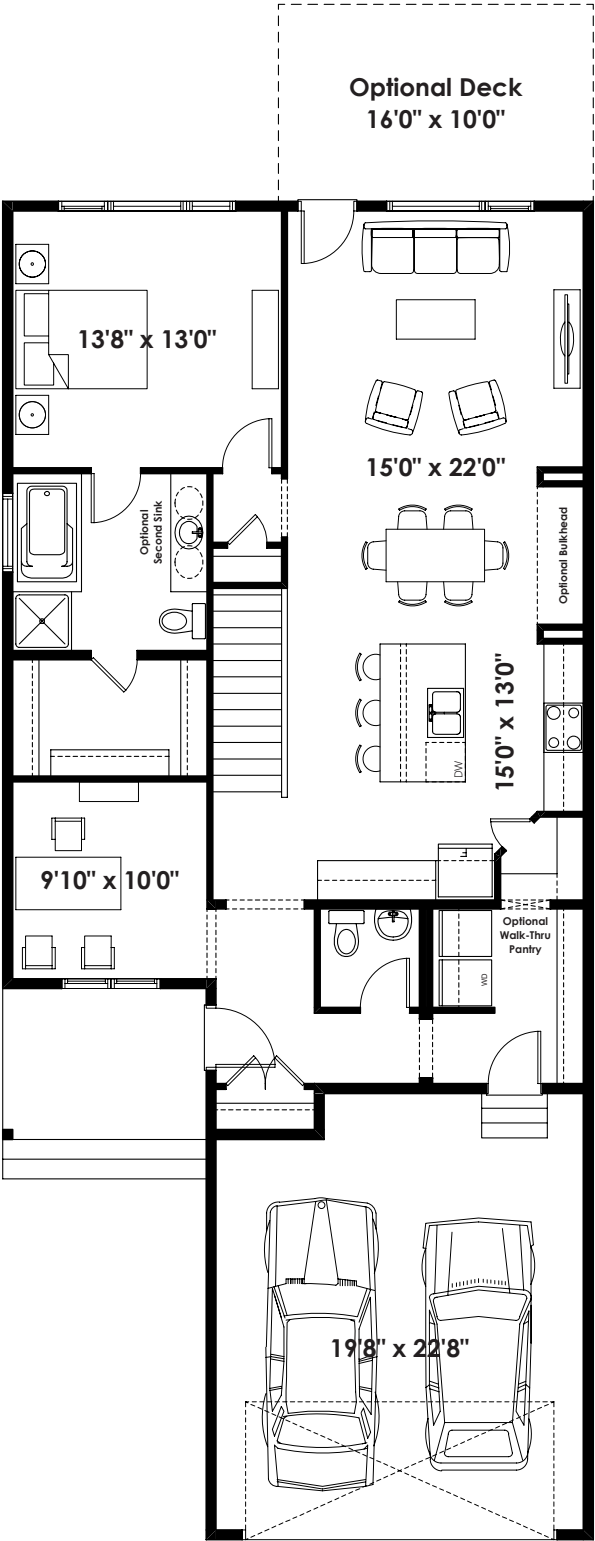
1,319+ SQ FT | 1 BED | 1.5 BATH



BETTER VALUE BY DESIGN
SINCE 1978 | HOMESBYAVI.COM

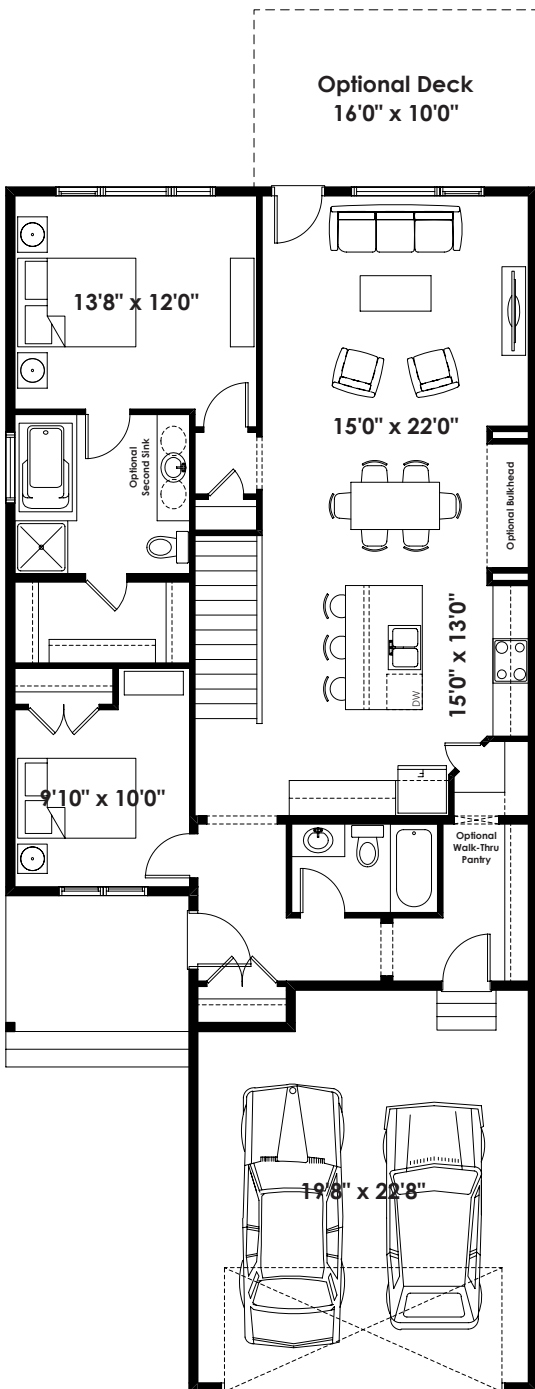
Homes by **AVI**

BASE FLOOR PLAN

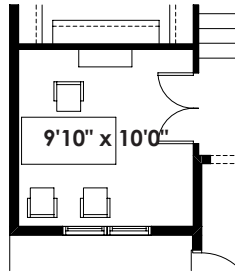


MAIN
1,319 SQ FT

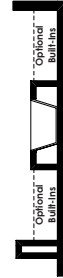
FLOOR PLAN OPTIONS



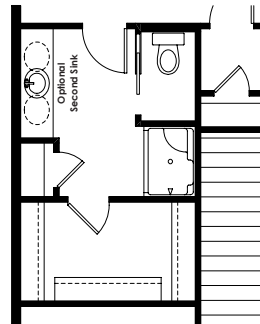
**Maricopa Main Floor Plan with
Optional Second Bedroom
& 3 Piece Bathroom
(Laundry Moves to Basement;
Adds 0 Sq. Ft.)**



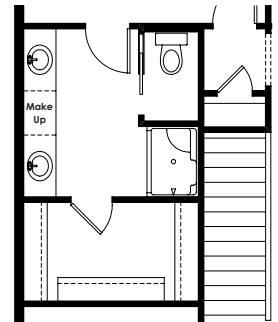
**Partial Maricopa Main Floor Plan with
Optional Double Doors to Flex Room
(Adds 0 Sq. Ft.)**



**Partial Main Floor Plan with
Optional Interior Fireplace
(Adds 0 Sq. Ft. to Main Floor)**



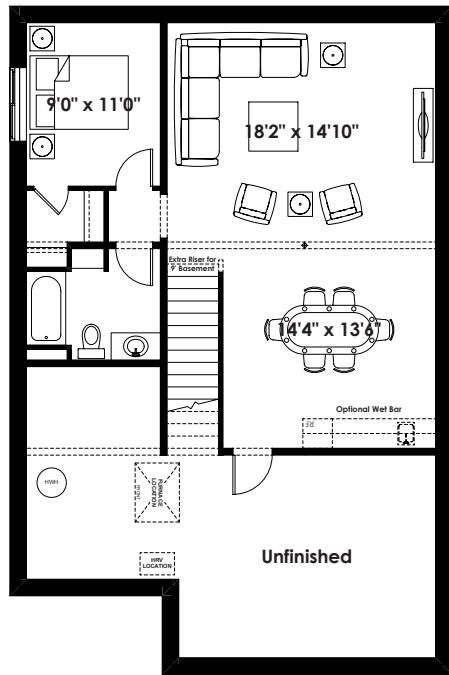
**Partial Maricopa Main Floor Plan
with Optional 3 Piece Ensuite
(Adds 0 Sq. Ft.)**



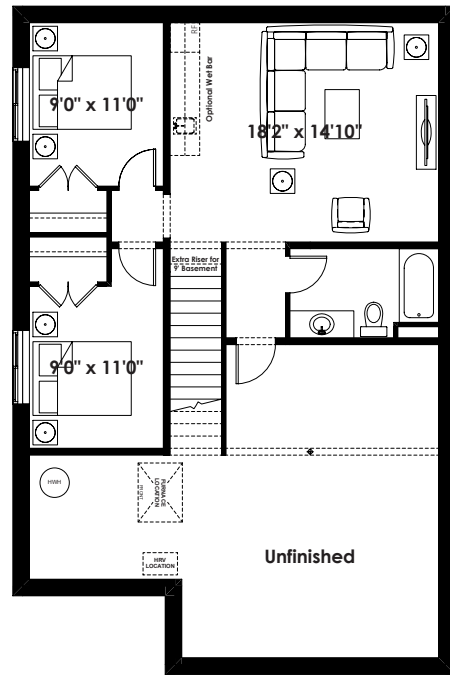
**Partial Maricopa Main Floor Plan
with Optional 3 Piece Ensuite
with Make Up Desk
(Adds 0 Sq. Ft.)**

**ADDITIONAL
OPTIONS**

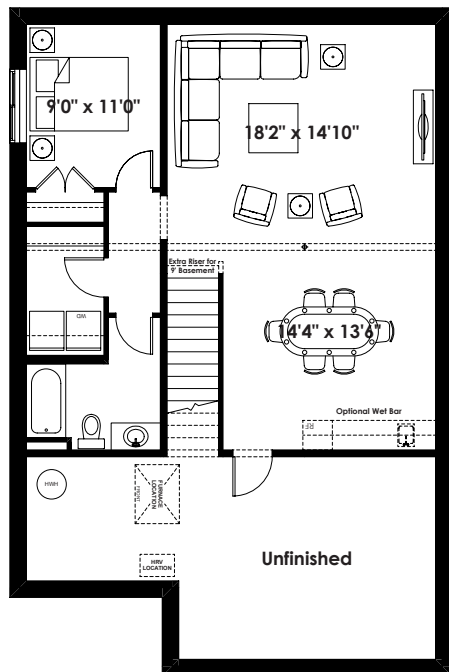
FLOOR PLAN OPTIONS



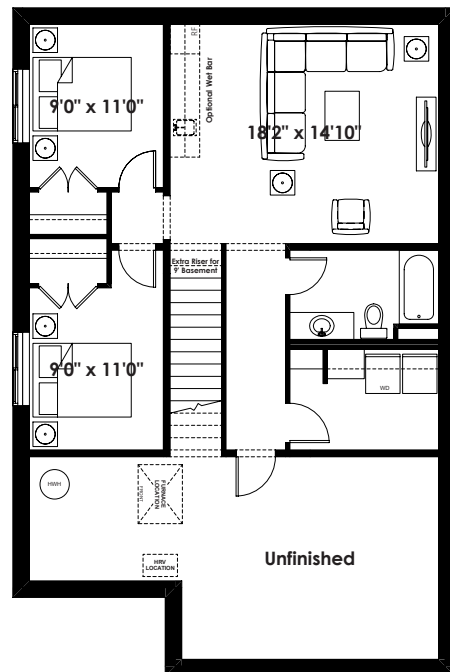
Optional Basement Room Layout
752 Sq. Ft. (Finished Area;
Not Included in Contract)



Alternate Two Bedroom
Optional Basement Room Layout
698 Sq. Ft. (Finished Area;
Not Included in Contract)



Optional Basement Room Layout for
use with Optional Second Bedroom
& 3 Piece Bathroom
812 Sq. Ft. (Finished Area;
Not Included in Contract)



Alternate Two Bedroom
Optional Basement Room Layout for
use with Optional Second Bedroom
& 3 Piece Bathroom
812 Sq. Ft. (Finished Area;
Not Included in Contract)

Prices are subject to change without notice. Actual floor plan, elevation, and square footage may not be exactly as shown. Square footage is measured to Alberta Building Code (ABC) regulations. Builder reserves the right to make changes without notice. E&OE.

Homes by **AVI**