

SHOW
HOME

THE ANDRE

2,477 SQ FT | 3 BED | 2.5 BATH

541 SAVANNA DRIVE NE



THIS FRONT DRIVE HOME FEATURES

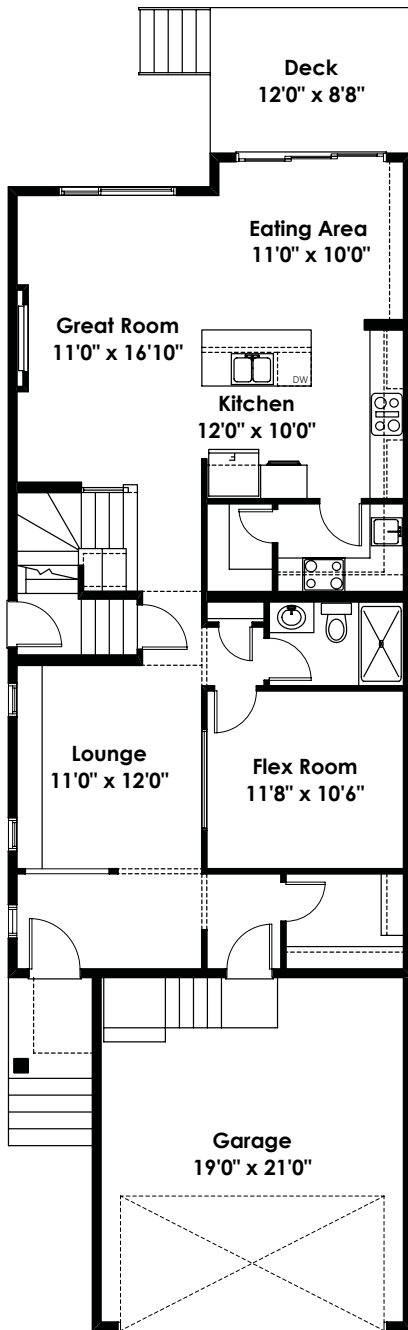
- 2 Main Floor Living Spaces
- Main floor Flex room (optional upgrade to Bedroom)
- Optional Main Floor Full Bathroom
- Upgraded Spice Kitchen
- Kitchen Upgraded Built-In Appliances with cooktop and chimney hood fan
- Upgraded Electric Fireplace with feature wall tiled to ceiling
- Upgraded 30" Upper Cabinets in Kitchen
- 3 Bedroom upper (optional upgrade to 4 Bedroom Upper)
- Side Entry
- Optional Basement Legal Suite



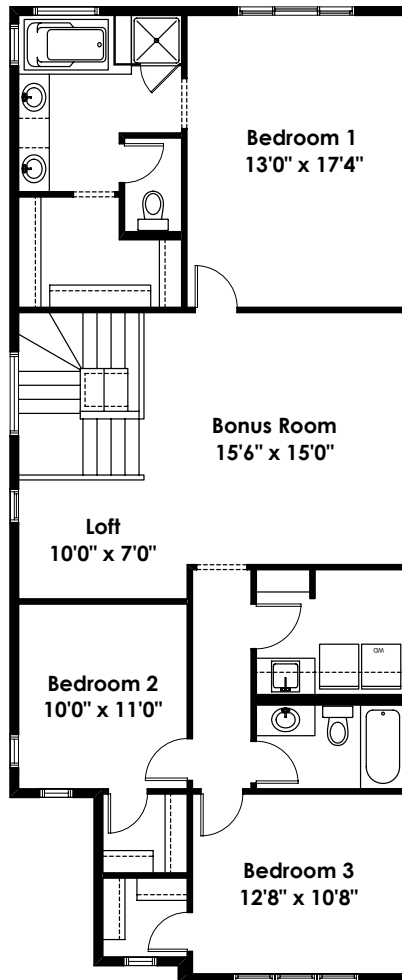
BETTER VALUE BY DESIGN
SINCE 1978 | HOMESBYAVI.COM

Homes by **AVI**

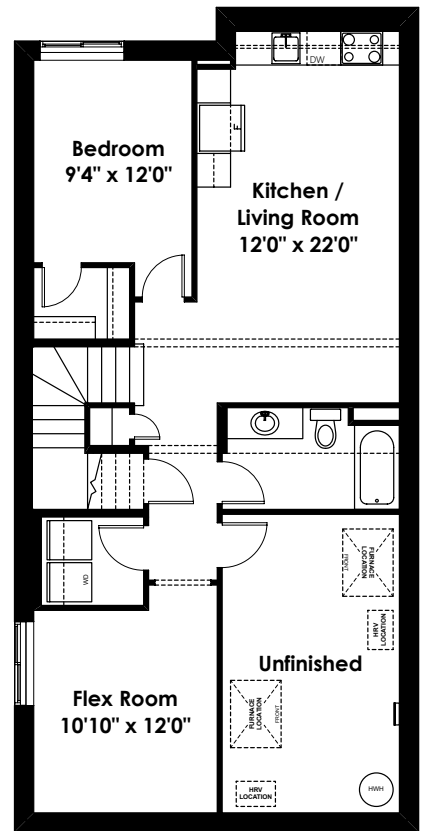
FLOOR PLAN



MAIN
1,152 SQ FT



UPPER
1,325 SQ FT



BASEMENT
802 SQ FT

For more information or to book an appointment please contact us at **587.349.7808**

Prices are subject to change without notice. Actual floor plan, elevation, and square footage may not be exactly as shown. Square footage is measured to Alberta Building Code (ABC) regulations. Builder reserves the right to make changes without notice. E&OE.

Homes by **AVI**