

QUICK  
POSSESSION

# THE HEMSWORTH

2,053 SQ FT | 3 BED | 2.5 BATH

8335-224 STREET NW



## THIS FRONT DRIVE HOME FEATURES

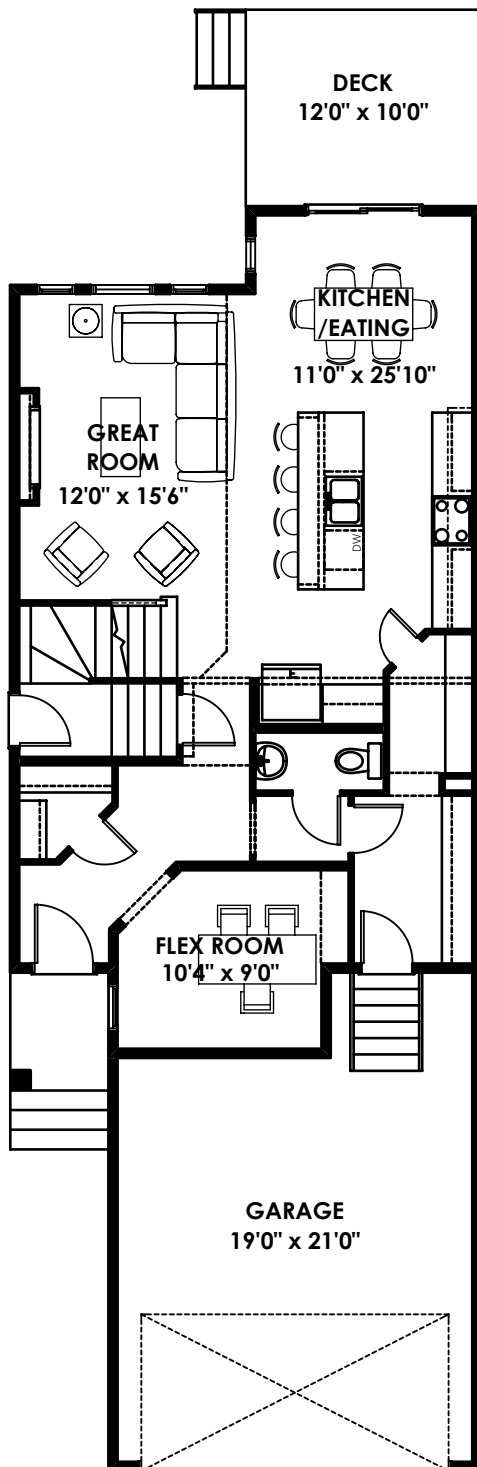
- Electric fireplace with bump out to the ceiling
- Extended kitchen w/ 9' island
- Chimney hood fan in kitchen
- Separate entrance for future basement suite
- Ensuite complete with double sinks, soaker tub and glass wall shower w/ tiled bench
- MDF shelving in pantry
- Built in lockers and bench in the mudroom



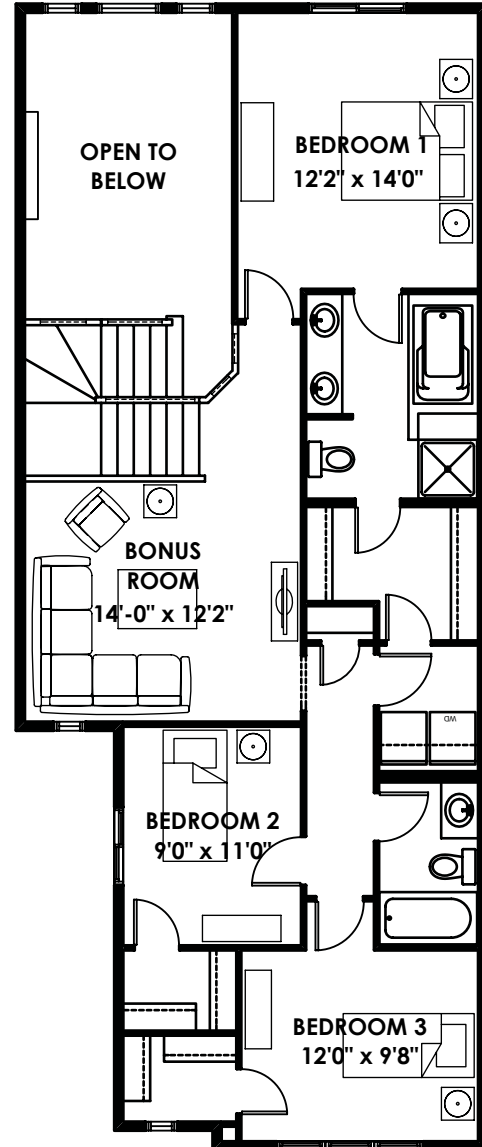
BETTER VALUE BY DESIGN  
SINCE 1978 | HOMESBYAVI.COM

Homes by **AVI**

## FLOOR PLAN



**MAIN**  
937 SQ FT



**UPPER**  
1116 SQ FT

For more information or to book an appointment please contact us at **587-525-5099**

Prices are subject to change without notice. Actual floor plan, elevation, and square footage may not be exactly as shown. Square footage is measured to Alberta Building Code (ABC) regulations. Builder reserves the right to make changes without notice. E&OE.

Homes by **AVI**