

24'

*New*  
FEATURED  
FLOOR PLAN

# THE BRYSON

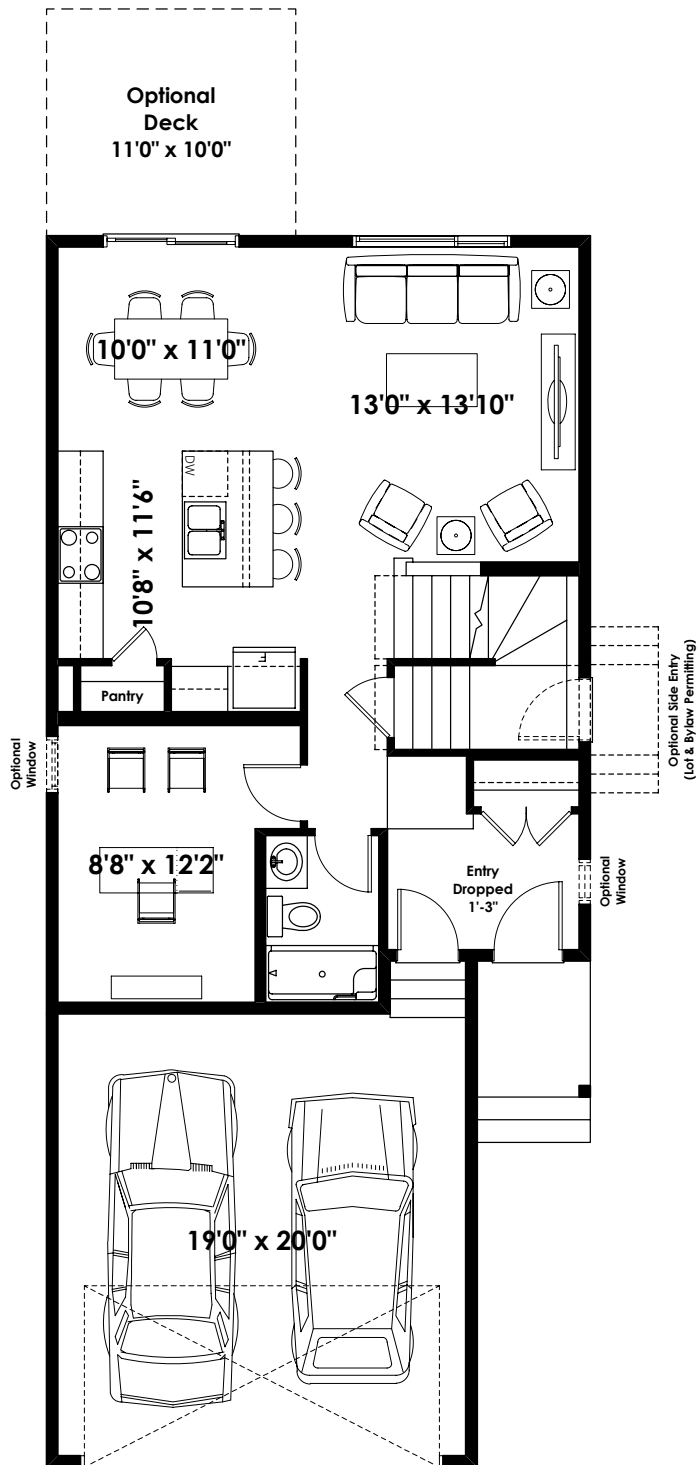
1,812+ SQ FT | 3 BED + FLEX | 3 BATH



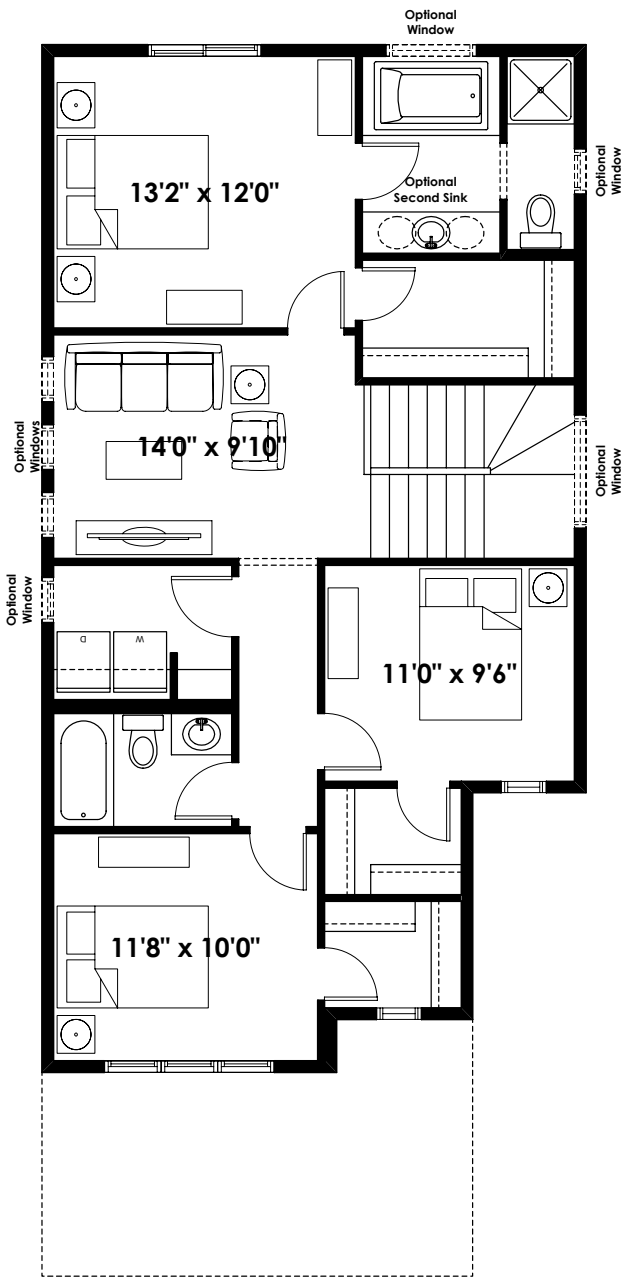
BETTER VALUE BY DESIGN  
SINCE 1978 | HOMESBYAVI.COM

*Homes by* **AVI**

BASE FLOOR PLAN

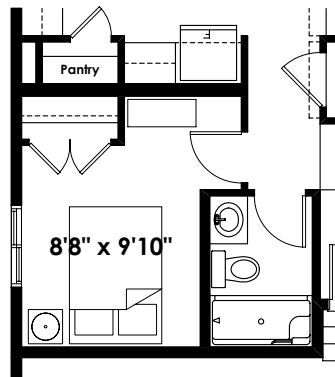


**MAIN**  
803 SQ FT

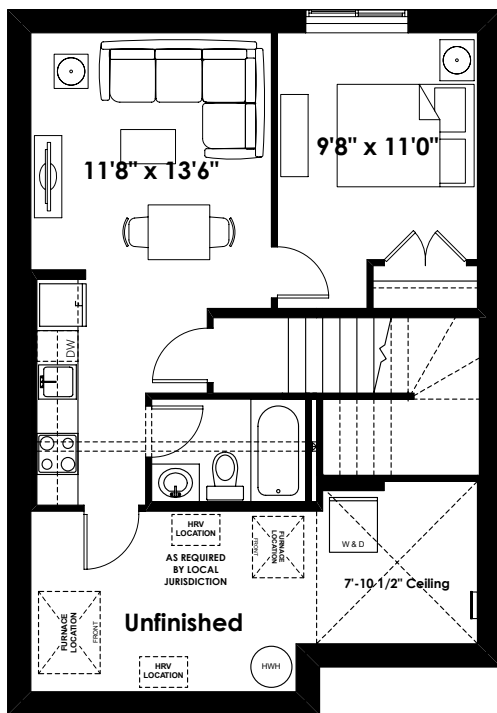


**UPPER**  
1,009 SQ FT

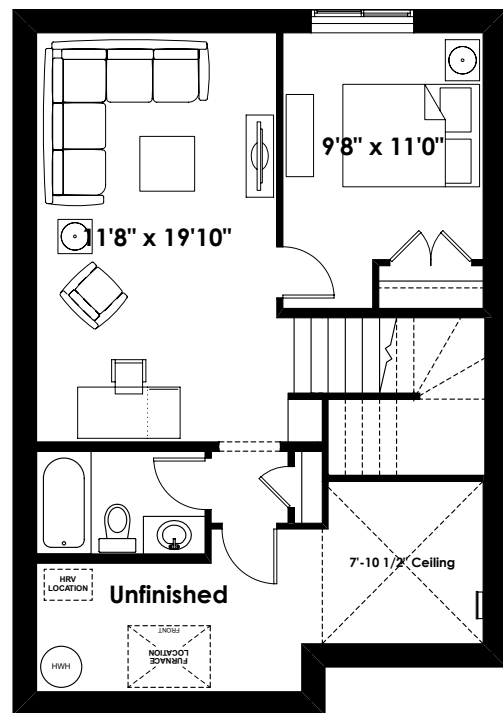
## FLOOR PLAN OPTIONS



**Partial Main Floor Plan with  
Optional Bedroom**  
(Adds 0 Sq.Ft. to Main Floor)



**Optional Basement Suite Layout**  
457 Sq. Ft. (Finished Area;  
Includes 9' Foundation Walls)



**Optional Basement Room Layout**  
485 Sq. Ft. (Finished Area;  
Includes 9' Foundation Walls)

# FEATURES OF THE BRYSON

---

- **Optional Side Entrance**  
Perfect for future plans, like adding a basement suite for family members or use as a rental unit.
- **Main Floor Bed & Full Bath**  
Ideal for a home office, guest room, or multi-generational living.
- **10' Front Entry Ceiling**  
Prepare to wow your guests with a grand entrance.
- **Spacious Kitchen-Dining-Great Room**  
Perfect for entertaining or quiet evenings at home.
- **Upper Floor Loft**  
A quiet retreat for hobbies or movie nights.
- **Elevated Ceilings**  
9' basement and main floor ceilings create a sense of spaciousness and maximize natural light.
- **4-Piece Ensuite**  
Your private relaxation oasis, complete with all the comforts you deserve.
- **Upper Floor Laundry Room**  
Because convenience shouldn't be a luxury.
- **Walk-in Closets in Secondary Bedrooms**  
Plenty of storage for the whole family.
- **Double Attached Front Drive Garage**  
Convenience and protection for your vehicles.

