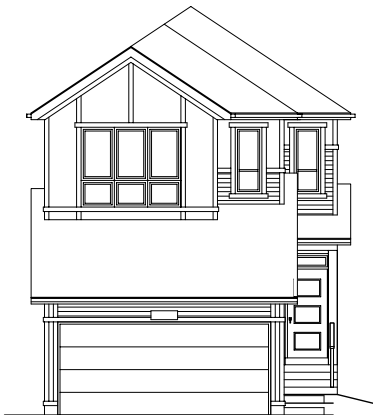


QUICK  
POSSESSION

# THE WHITMORE

1,684 SQ FT | 3 BED | 2.5 BATH

17432 2 STREET NW



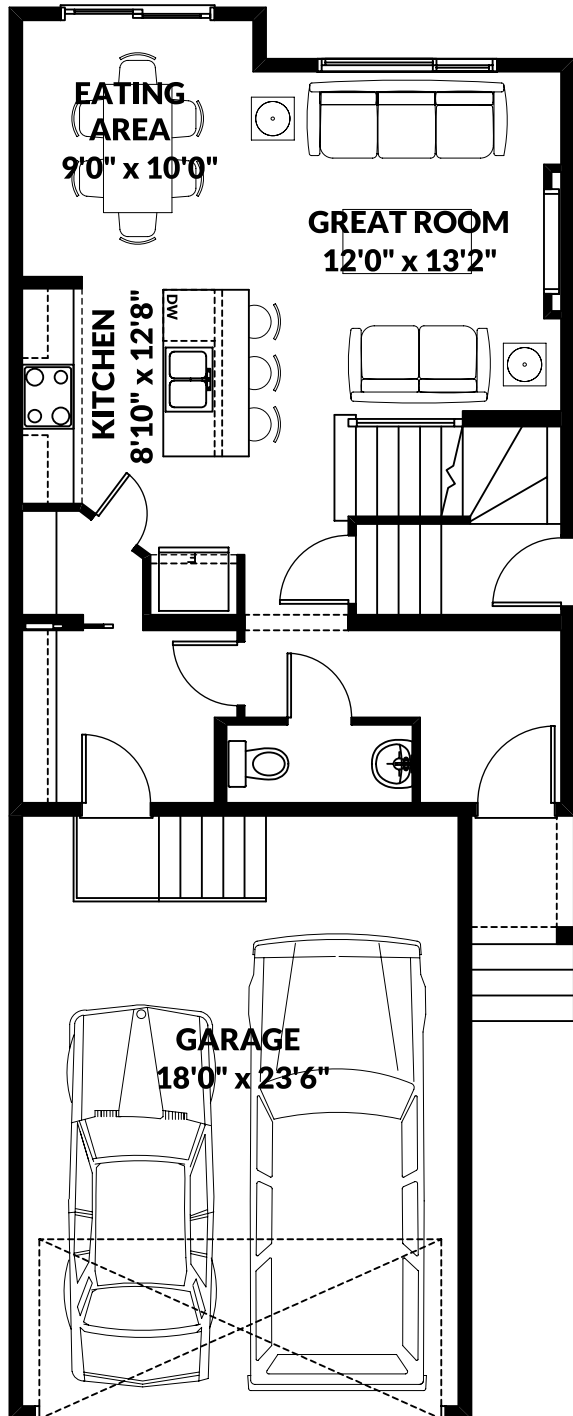
## THIS FRONT DRIVE HOME FEATURES

- 39' upper cabinets with chimney hood fan and gas rough-in.
- MDF shelving in pantry.
- Upgraded ensuite with double sinks.
- Side entrance at stairwell.
- Fireplace in great room.
- BBQ gas-line.

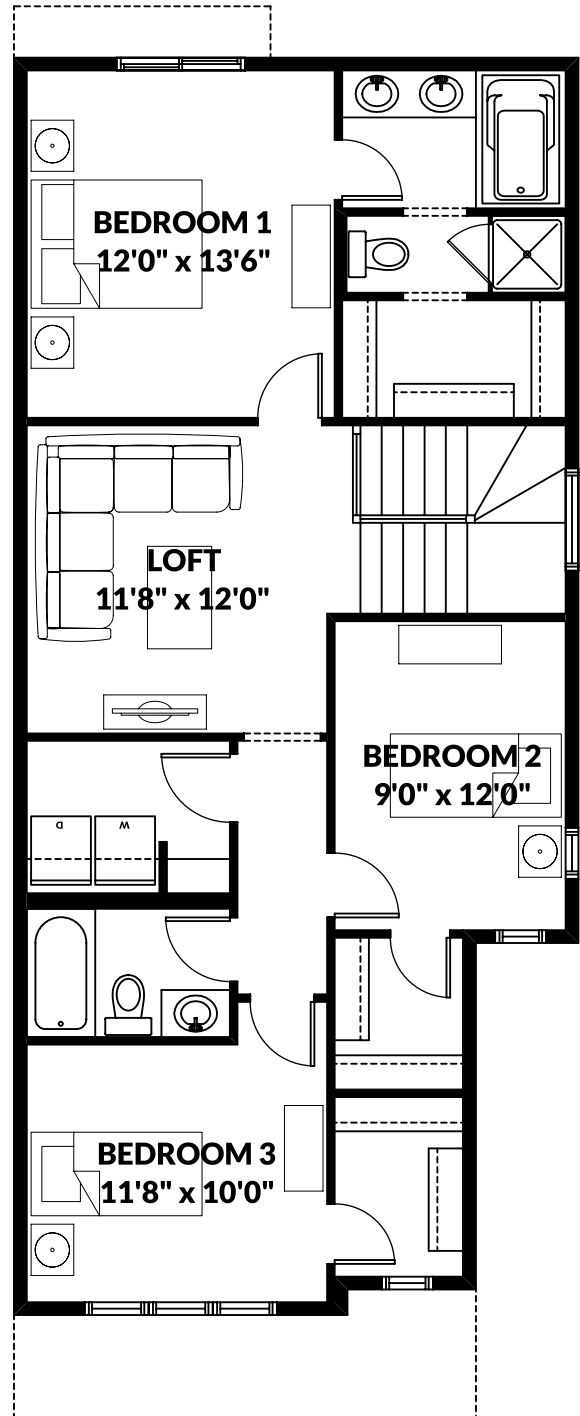
BETTER VALUE BY DESIGN  
SINCE 1978 | HOMESBYAVI.COM

Homes by **AVI**

## FLOOR PLAN



**MAIN**  
669 SQ FT



**UPPER**  
1,015 SQ FT

For more information or to book an appointment please contact us at **587.525.5079**

Prices are subject to change without notice. Actual floor plan, elevation, and square footage may not be exactly as shown. Square footage is measured to Alberta Building Code (ABC) regulations. Builder reserves the right to make changes without notice. E&OE.

Homes by **AVI**