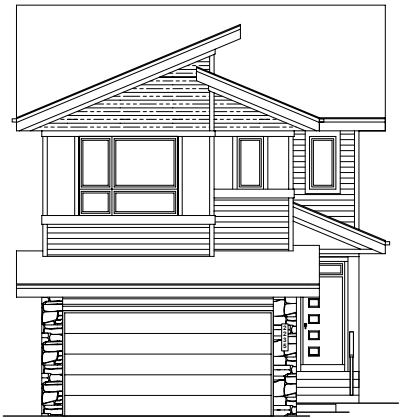


QUICK
POSSESSION

THE HEMSWORTH

2,067 SQ FT | 4 BED | 3 BATH

2235 194 ST NW



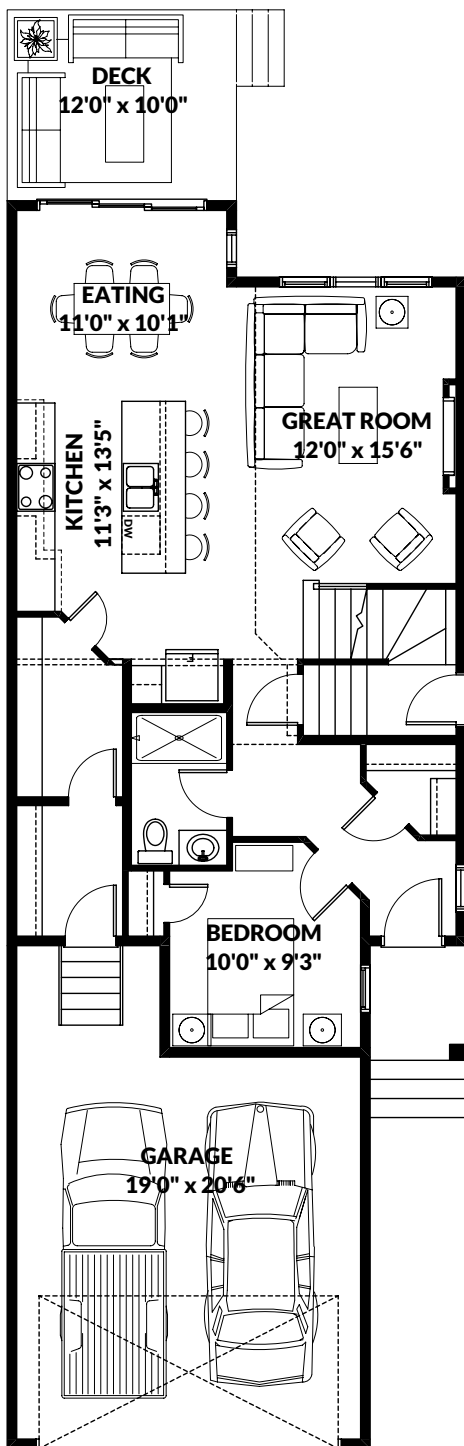
THIS FRONT DRIVE HOME FEATURES

- Regular lot with additional side windows.
- Open to below great room with fireplace.
- Separate entrance with future legal basement roughed-in.
- Upgraded kitchen with pots and pan drawer, chimney hood fan.
- Main floor bedroom with walk in shower full bath.
- Spindle railing.
- Quartz throughout.
- Deck included.

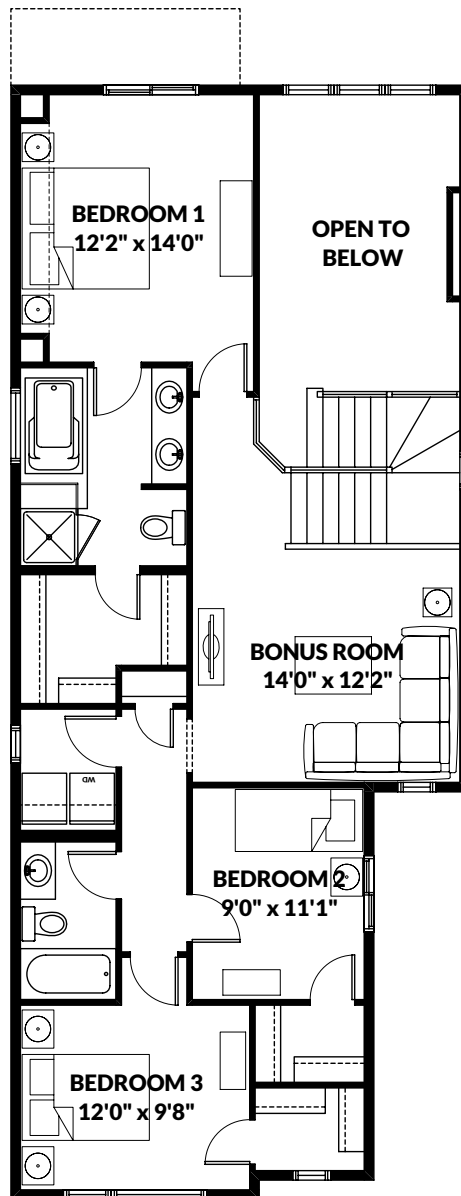
BETTER VALUE BY DESIGN
SINCE 1978 | HOMESBYAVI.COM

Homes by **AVI**

FLOOR PLAN



MAIN
957 SQ FT



UPPER
1,115 SQ FT

For more information or to book an appointment please contact us at **587.525.5089**

Prices are subject to change without notice. Actual floor plan, elevation, and square footage may not be exactly as shown. Square footage is measured to Alberta Building Code (ABC) regulations. Builder reserves the right to make changes without notice. E&OE.

Homes by **AVI**