

QUICK  
POSSESSION

# THE LINCOLN

2,567 SQ FT | 4 BED | 3 BATH

303 STILES WAY



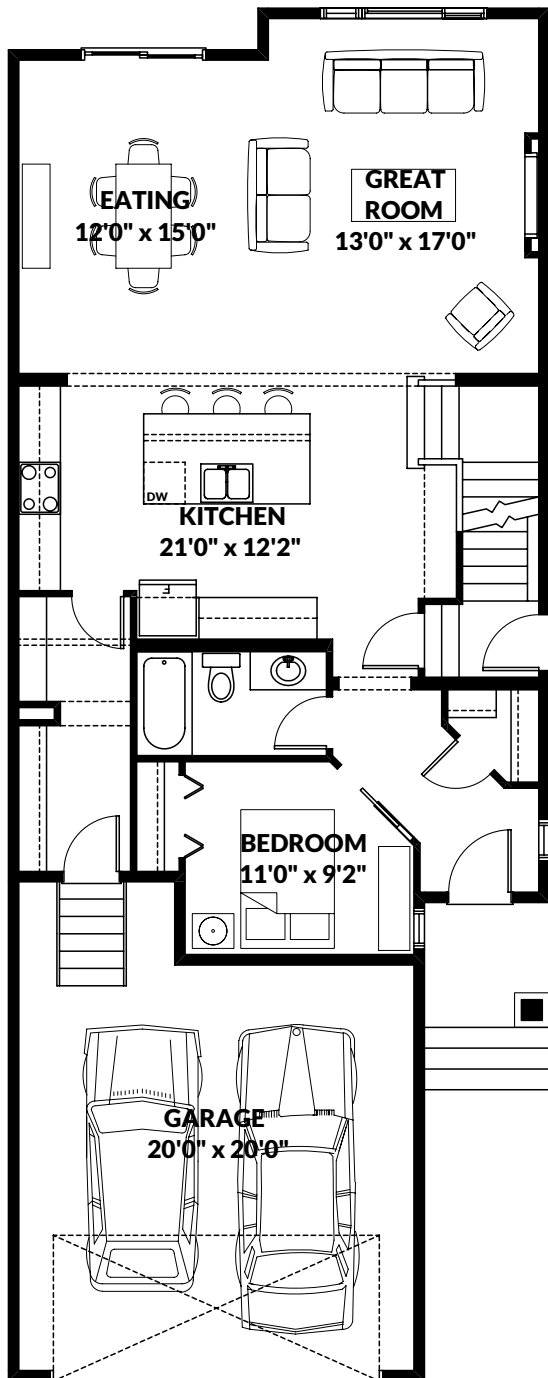
## THIS FRONT DRIVE HOME FEATURES

- Bedroom on main floor.
- Full bathroom on main floor.
- Landscaping included.
- Side entrance.
- 9' main and basement ceiling.
- Extra windows on the side of the house.

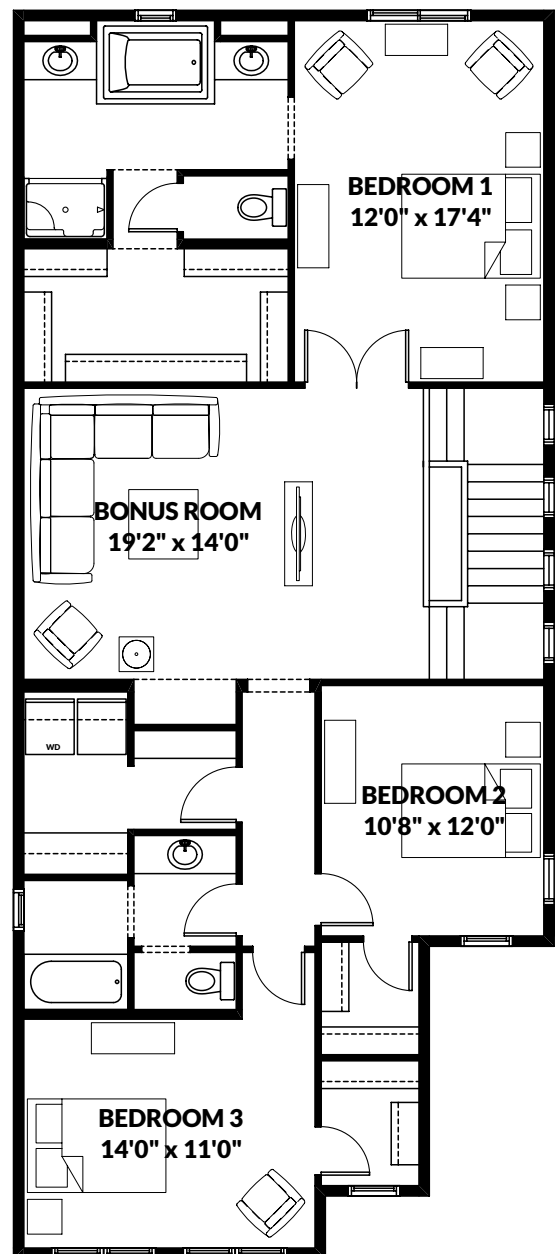
BETTER VALUE BY DESIGN  
SINCE 1978 | HOMESBYAVI.COM

Homes by **AVI**

## FLOOR PLAN



**MAIN**  
1,122 SQ FT



**UPPER**  
1,445 SQ FT

For more information or to book an appointment please contact us at **587.525.5210**

Prices are subject to change without notice. Actual floor plan, elevation, and square footage may not be exactly as shown. Square footage is measured to Alberta Building Code (ABC) regulations. Builder reserves the right to make changes without notice. E&OE.

Homes by **AVI**