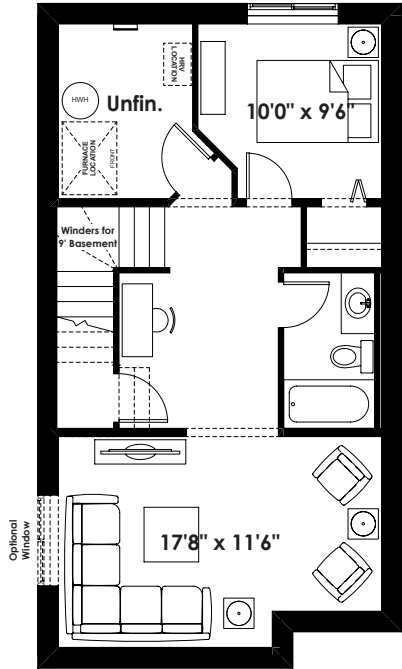
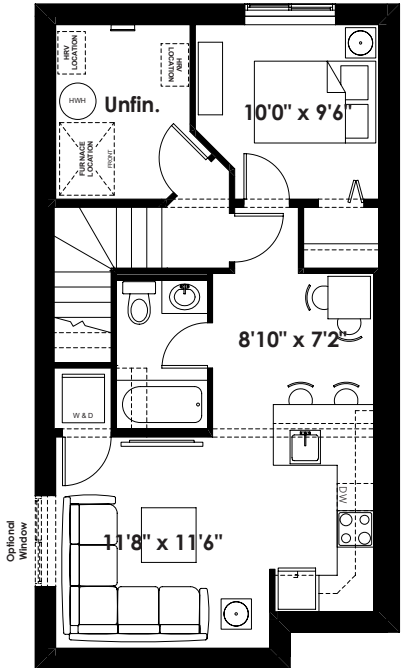


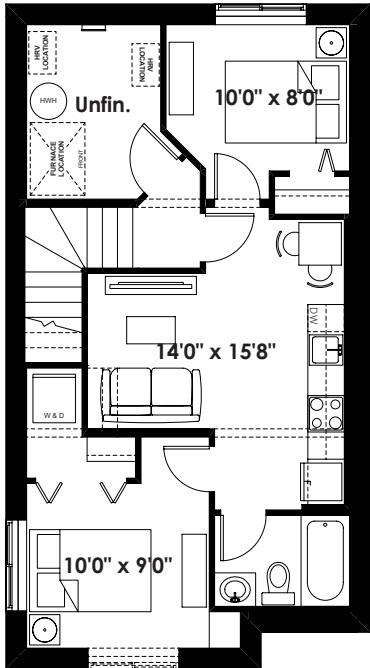
FLOOR PLAN OPTIONS



Optional 1 Bedroom
Basement Room Layout
510 Sq. Ft. (Finished Area)



Optional 1 Bedroom
Basement Suite Layout
523 Sq. Ft. (Finished Area;
Must Add Optional Side Entry;
Must Add 9' Foundation Walls)



Optional 2 Bedroom
Basement Suite Layout
523 Sq. Ft. (Finished Area;
Must Add Optional Side Entry;
Must Add 9' Foundation Walls)

Prices are subject to change without notice. Actual floor plan, elevation, and square footage may not be exactly as shown. Square footage is measured to Alberta Building Code (ABC) regulations. Builder reserves the right to make changes without notice. E&OE.

Homes by AVI

20'

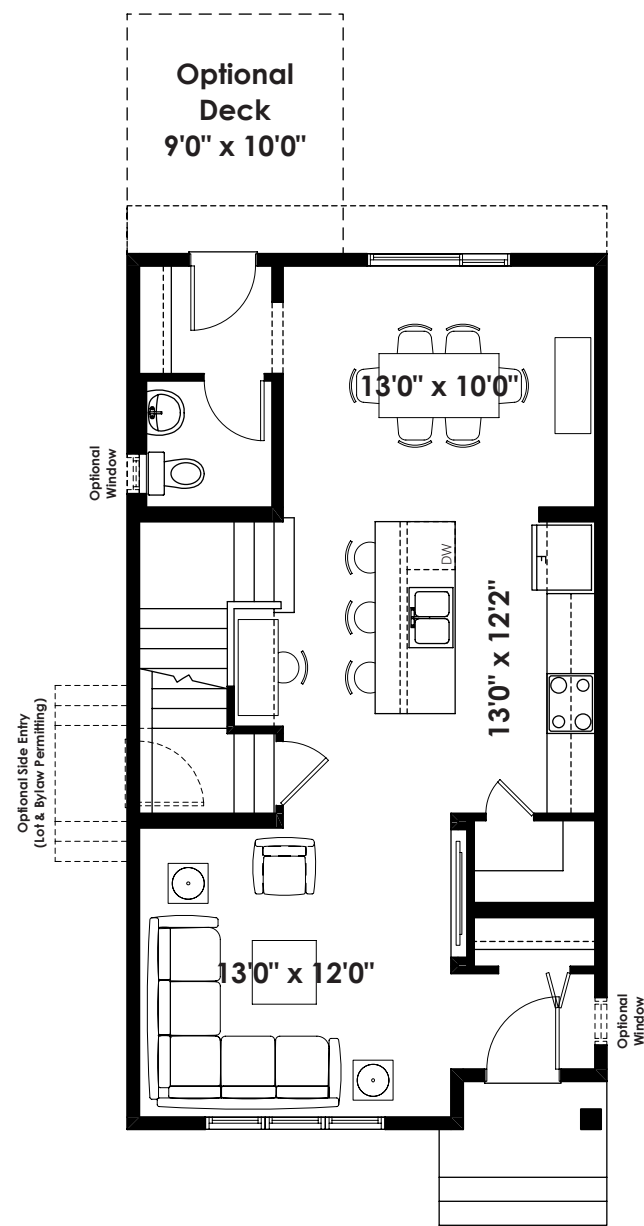
THE ALEXIS
1,468+ SQ FT | 3 BED | 2.5 BATH



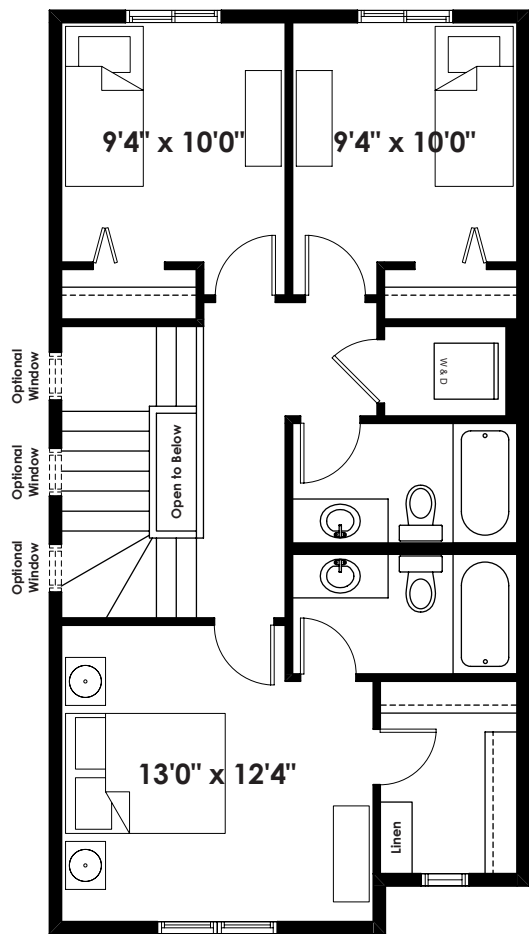
BETTER VALUE BY DESIGN
SINCE 1978 | HOMESBYAVI.COM

Homes by AVI

BASE FLOOR PLAN

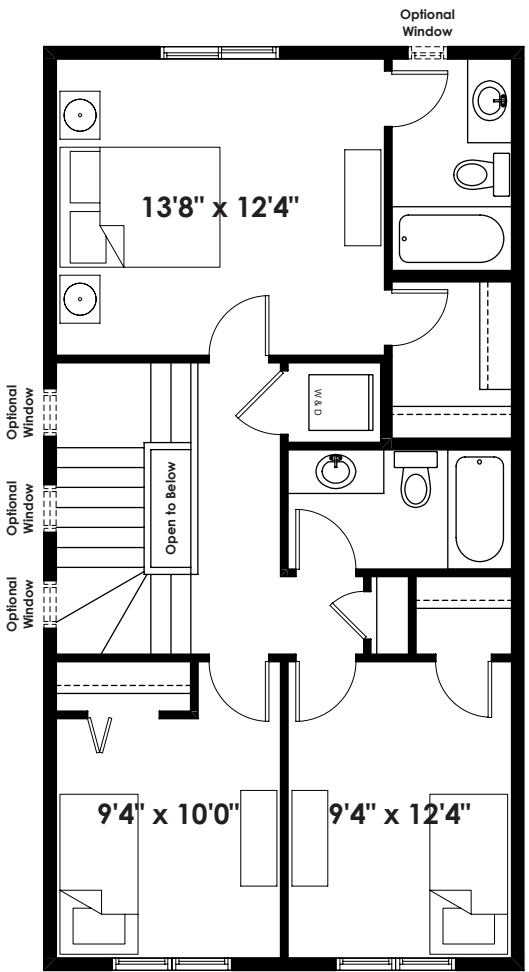
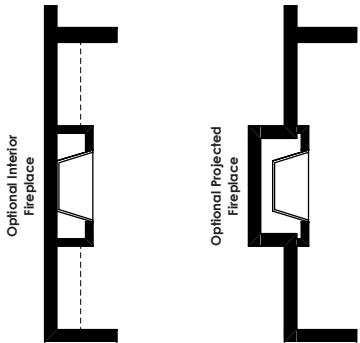


MAIN
718 SQ FT



SECOND
750 SQ FT

FLOOR PLAN OPTIONS



HENDERSON
Second Floor Plan
(Adds 12 Sq. Ft. to Second Floor)

ADDITIONAL
OPTIONS